

Tire Pressure Warning System Activation & Initialization

Service Category General

Section Pre-Delivery Service

Market USA

Toyota Supports
 ASE Certification 

Applicability

YEAR(S)	MODEL(S)	ADDITIONAL INFORMATION
2011	Camry	

Introduction

The 2011 model year Camry is equipped with a direct-type Tire Pressure Warning System (TPWS). Each tire (except the spare tire) has a tire pressure warning valve/sensor that measures tire pressure data. The data is transmitted to the Tire Pressure Warning System antenna/receiver and then to the Tire Pressure Warning System ECU.

During Pre-Delivery Service (PDS), the tire pressure warning valves/sensors must be activated for Japan-built vehicles by following the activation procedure in this TSB. NAP-built vehicles do not require activation, but both Japan-built and NAP-built vehicles require the TPWS to be initialized by following the initialization procedure in this TSB.

Required Tools & Equipment

REQUIRED EQUIPMENT	SUPPLIER	PART NUMBER	QTY
TIS Techstream* NOTE: Software version 4.21.002 or later is required.	ADE	TSPKG1	1

* Essential SST.

NOTE

Additional TIS Techstream units may be ordered by calling Approved Dealer Equipment (ADE) at 1-800-368-6787.

Warranty Information

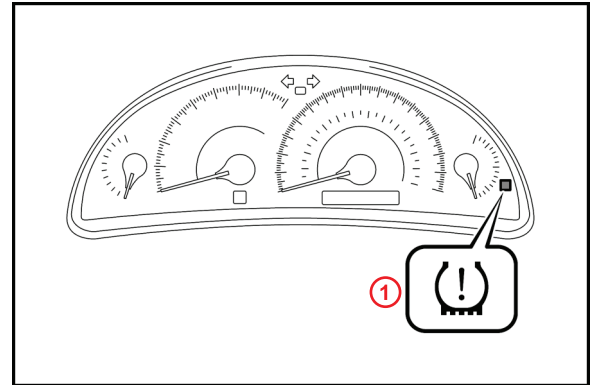
OP CODE	DESCRIPTION	TIME	OFP	T1	T2
N/A	Not Applicable to Warranty	—	—	—	—

Tire Pressure Warning System Activation & Initialization

Reference

- After cycling to the “IG-ON” position, the Low Tire Pressure Warning Light will blink for 1 minute and then remain illuminated until all the tire pressure warning valves/sensors are activated.
- The Diagnostic Trouble Codes (DTCs) listed below may be stored in the TPWS ECU until the tire pressure warning valves/sensors are activated.
- The DTCs will automatically clear when the tire pressure warning valves/sensors are activated.

Figure 1.



1	Low Tire Pressure Warning Light
---	---------------------------------

DTC NO. *1	DTC NO.*2	DTC EXPLANATION
11	C2111	Transmitter ID1 Operation Stop
12	C2112	Transmitter ID2 Operation Stop
13	C2113	Transmitter ID3 Operation Stop
14	C2114	Transmitter ID4 Operation Stop

*1 : DTC No. indicated by blinking of the Low Tire Pressure Warning Light.

*2 : DTC No. indicated on TIS Techstream.

Activation Procedure

NOTE

- **ONLY perform the following activation procedure on Japan-built vehicles.**
- **For NAP vehicles, proceed to the Initialization Procedure.**

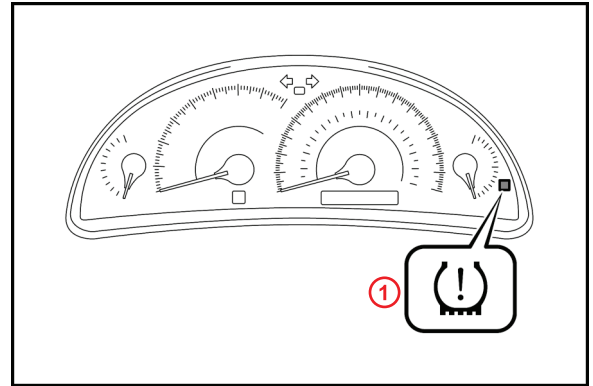
1. Connect TIS techstream.

Tire Pressure Warning System Activation & Initialization

Activation Procedure (Continued)

2. Cycle the ignition switch to the "IG-ON" position and check that the Low Tire Pressure Warning Light blinks for 1 minute and then remains illuminated.

Figure 2.



1 Low Tire Pressure Warning Light

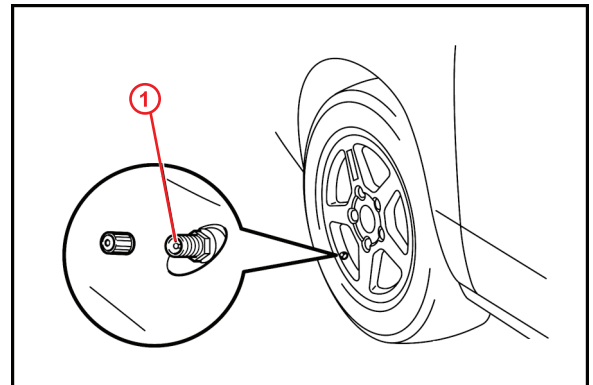
3. Press or remove the valve core to reduce the tire inflation pressure rapidly by 6 psi (0.4 kgf/cm², 40 kPa), or more, within 30 seconds.

If the tire inflation pressure is NOT reduced by 6 psi (0.4 kgf/cm², 40 kPa), or more, within 30 seconds, the tire pressure warning valves/sensors will NOT be activated.

NOTE

This operation is required for the system to be activated and MUST be performed for each tire (except the spare tire), one at a time.

Figure 3.



1 Core

4. Check that the Low Tire Pressure Warning Light goes OFF after all the tire pressure warning valves/sensors are activated.
5. Using TIS techstream, check for TPWS DTCs.
 - If NO DTCs are stored, go to step 1 of the Initialization Procedure.
 - If DTCs C2111 – C2114 are stored, repeat step 3.

Tire Pressure Warning System Activation & Initialization

Initialization Procedure

NOTE
 Perform the following initialization procedure for BOTH NAP-built and Japan-built vehicles.

1. Cycle the ignition switch to the "IG-ON" mode and connect TIS techstream.
2. Adjust all tires (except the spare tire) to the standard tire inflation pressure, as indicated on the Tire and Loading Information label located inside the driver's door jamb and confirm that the Low Tire Pressure Warning Light is OFF.

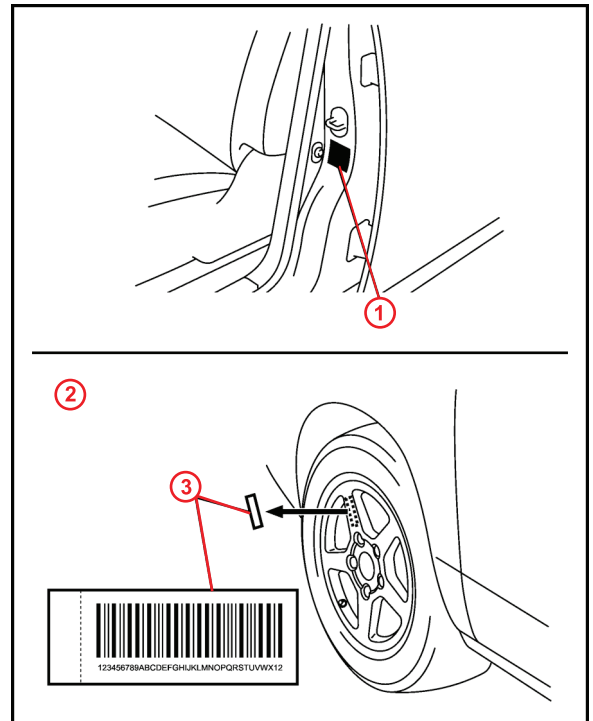
NOTE
 To adjust tire pressure correctly when outside temperature is significantly colder or warmer than shop temperature. Follow the procedures outlined in the Tire Inflation Pressure Compensation and Adjustment service bulletin ([T-SB-0345-08](#)).

NOTE
 Adjust the tire pressure when the tires are cold.

NAP-built:

Remove the ID number labels that are attached to each wheel and discard.

Figure 4.



1	Tire and Loading Information Label
2	NAP-built
3	ID Number Label

Tire Pressure Warning System Activation & Initialization

Initialization Procedure (Continued)

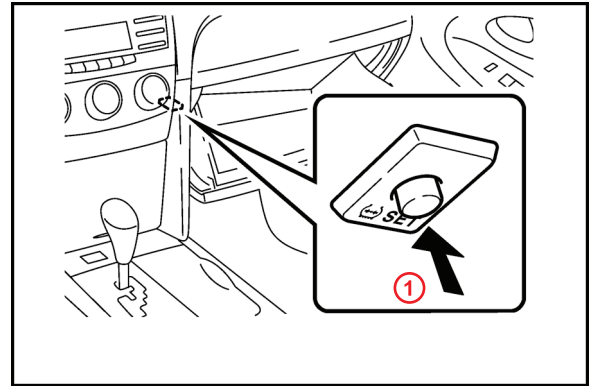
3. Push and hold the Tire Pressure Warning “SET” Switch for 3 seconds until the Low Tire Pressure Warning Light blinks 3 times and then turns OFF to set the tire pressure initialization.

The ignition switch **MUST** be left in the “IG-ON” position for **AT LEAST 5 minutes** for initialization to complete.

NOTE

Initialization will **NOT** complete if the ignition switch is not left in the “IG-ON” position for **AT LEAST 5 minutes**.

Figure 5.



1	Tire Pressure Warning “SET” Switch
----------	------------------------------------

4. Cycle the ignition switch to the “OFF” position and then to the “IG-ON” position.
5. Check the tire pressure values of all the tires using TIS techstream.

NOTE

- It can take 2 – 3 minutes for the tire pressure values to be displayed on the TIS techstream Data List.
- If the tire pressure values **CANNOT** be displayed on the TIS techstream screen, the initialization is **NOT** completed. Repeat steps 2 – 4.