

# TOYOTA

## SERVICE BULLETIN

TOYOTA MOTOR SALES, U.S.A., INC.

VOLUME

**10**

REFERENCE	PRODUCT GENERAL INFORMATION
NUMBER	<u>034</u>
DATE	<u>12-28-90</u>
MODEL	<u>ALL MODELS</u>

Page 1 of 2

### TOYOTA KEY CODE AND KEY CUTTER INFORMATION - 1991

The new key and double tumbler lock system originally introduced on the 1988 model Corolla is applicable to the following 1990 and 1991 models:

<u>Models</u>		<u>Model Year (s)</u>	<u>Code</u>
Corolla	AE92	1998-1991	G0001-G2000
Corolla	AE95	1990-1991	G0001-G2000
Celica	ST18#	1990-1991	P0001-P2000 (Except Lift Back Models)
MR2	SW#	1991	P0002-P2000
Supra	MA7#	1990-1991	X0001-X2000
Cressida	MX83	1989-1991	X0001-X2000
Truck	VN/VN	1989-1991	W0001-W2000

This new lock system is intended to achieve improved theft deterrence.

Previous notification of this new lock system was published in TSB Volume 9 (Product General Information #002 & #022) and in TSB Volume 10 (Product General Information #016 & #026). If you have not already obtained a new key cutter, this change requires Toyota dealers to acquire a new key cutter from Curtis Industries.

Contact your local Curtis representative or call Curtis Industries customer service at (216) 951-2400 for information on this new key cutter:

Master Kit #20417:

- (1) Gold handle key cutter #2046
- (2) Decoder slot TOY-50
- (3) Cam set DC-50
- (4) Carriage TOY-50

Separate Order Items:

- (5) Key blanks — TR-40 (Curtis Industries Key Blank)
- (6) New Key Code Book # 20481

For detailed 1991 model application and Toyota key blank part number information, please refer to the attached list and Curtis Industries publication which indicates the Toyota key application chart for 1990 and previous models.

NOTE: The old blue handle key cutter system will still apply to Celica liftback, Camry, 1991 Tercel and Previa models.

## TOYOTA KEY CODE AND KEY CUTTER INFORMATION - 1991 (Cont'd)

### 1991 KEY CODE AND KEY CUTTER INFORMATION

<u>SERIES</u>	<u>APPLICABLE MODEL</u>	<u>CODE SERIES</u>	<u>SLOT DECODER</u>	<u>CAM-SET MARKINGS</u>	<u>CARRIAGE MARKINGS</u>	<u>BLANK KEY PART NUMBER</u>	<u>KEY CUTTER</u>
TERCEL 1991 -	EL42, EL44	S0001 - S29878	TOY-3	TOY-3	TOY-10	90999-00166 90999-00167	BLUE HANDLE "
COROLLA 1988 -	AE92	G0001 - G2000TOY-50	TOY-50	DC-50	TOY-50	90999-00130 90999-00132	GOLD HANDLE "
COROLLA 1990 -	AE95	G0001 - G2000TOY-50	TOY-50	DC-50	TOY-50	90995-00130 90995-00132	GOLD HANDLE "
CELICA 1990 -	ST18# EXCEPT L/B	P0001 - P2000TOY-50	TOY-50	DC-50	TOY-50	90999-00163 90999-00164	GOLD HANDLE "
CELICA 1990 -	ST18# L/B	S0001 - S2000TOY-3	TOY-3	DC-3	TOY-10	90999-00166 90999-00167	BLUE HANDLE "
MR2 1991 -	SW20, 21	P0001 - P2000TOY-50	TOY-50	DC-50	TOY-50	90999-00163 90999-00164	GOLD HANDLE "
SUPRA 1990 -	MA7#	X0001 - X2000TOY-50	TOY-50	DC-50	TOY-50	90999-00174 90999-00153	GOLD HANDLE "
CAMRY TO DATE	SV21/VV21	F5951 - F9710M.N.	TOY-4	DC-1	TOY-4	90999-00118 90999-00099	BLUE HANDLE "
CRESSIDA 1989 -	MX83	X0001 - X2000TOY-50	TOY-50	DC-50	TOY-50	90999-00130 90999-00132	GOLD HANDLE "
LANDCRUISER 1991 -	FJ80	W0001 - W2000TOY-50	TOY-50	DC-50	TOY-50	90999-00164 90999-00163	GOLD HANDLE "
TRUCK 1989 -	ALL EXCEPT 4RUNNER	W0001 - W2000TOY-50	TOY-50	DC-50	TOY-50	90999-00130 90999-00132	GOLD HANDLE "
4RUNNER 1990	RN62#, 63#, 64# VN62#, 66#	W1000 - W2000TOY-50	TOY-50	DC-50	TOY-50	90999-00130 90999-00132	GOLD HANDLE "
PREVIA 1991 -	AC10, 20	S0001 - S2878TOY-3	TOY-3	TOY-3	TOY-10	90999-00166 90999-00166	BLUE HANDLE "

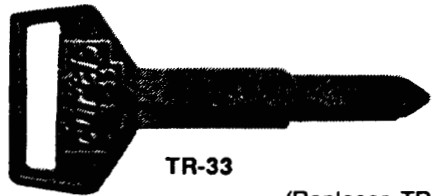


# TOYOTA KEY BLANKS

4-2-102

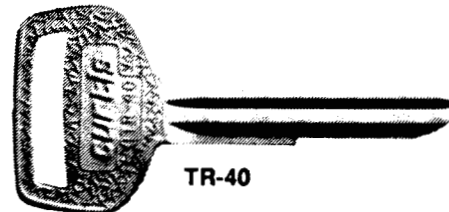
CODE KITS

## TOYOTA

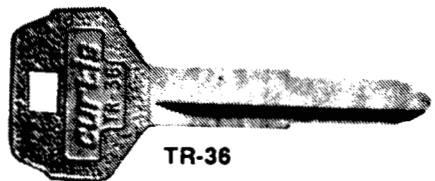


TR-33

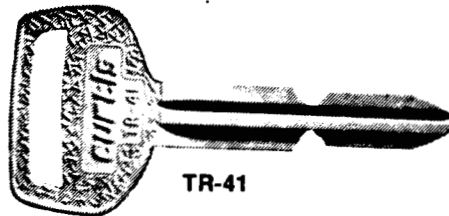
(Replaces TR-29)



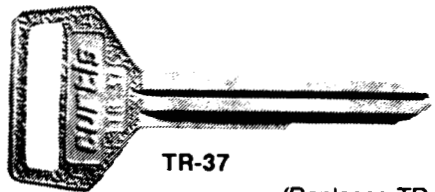
TR-40



TR-36

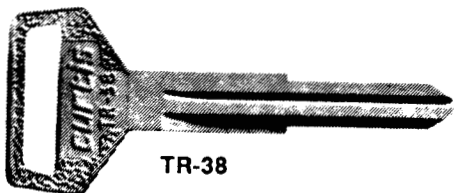


TR-41



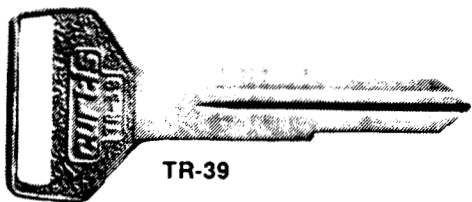
TR-37

(Replaces TR-28)



TR-38

(Replaces TR-25)



TR-39

### KEY CONVERSION

Original Toyota No.	CURTIS No.
90999 - 00066	TR-37
90999 - 00067	TR-38
90999 - 00081	TR-38
90999 - 00085	TR-33
90999 - 00099	TR-37
90999 - 00104	TR-36
90999 - 00106	TR-36
90999 - 00109	TR-38
90999 - 00110	TR-38
90999 - 00112	TR-39
90999 - 00113	TR-39
90999 - 00118	TR-37
90999 - 00130	TR-40
90999 - 00132	TR-40
Not Available	TR-41

Curtis Industries, Inc.

Retail

Printed in U.S.A.

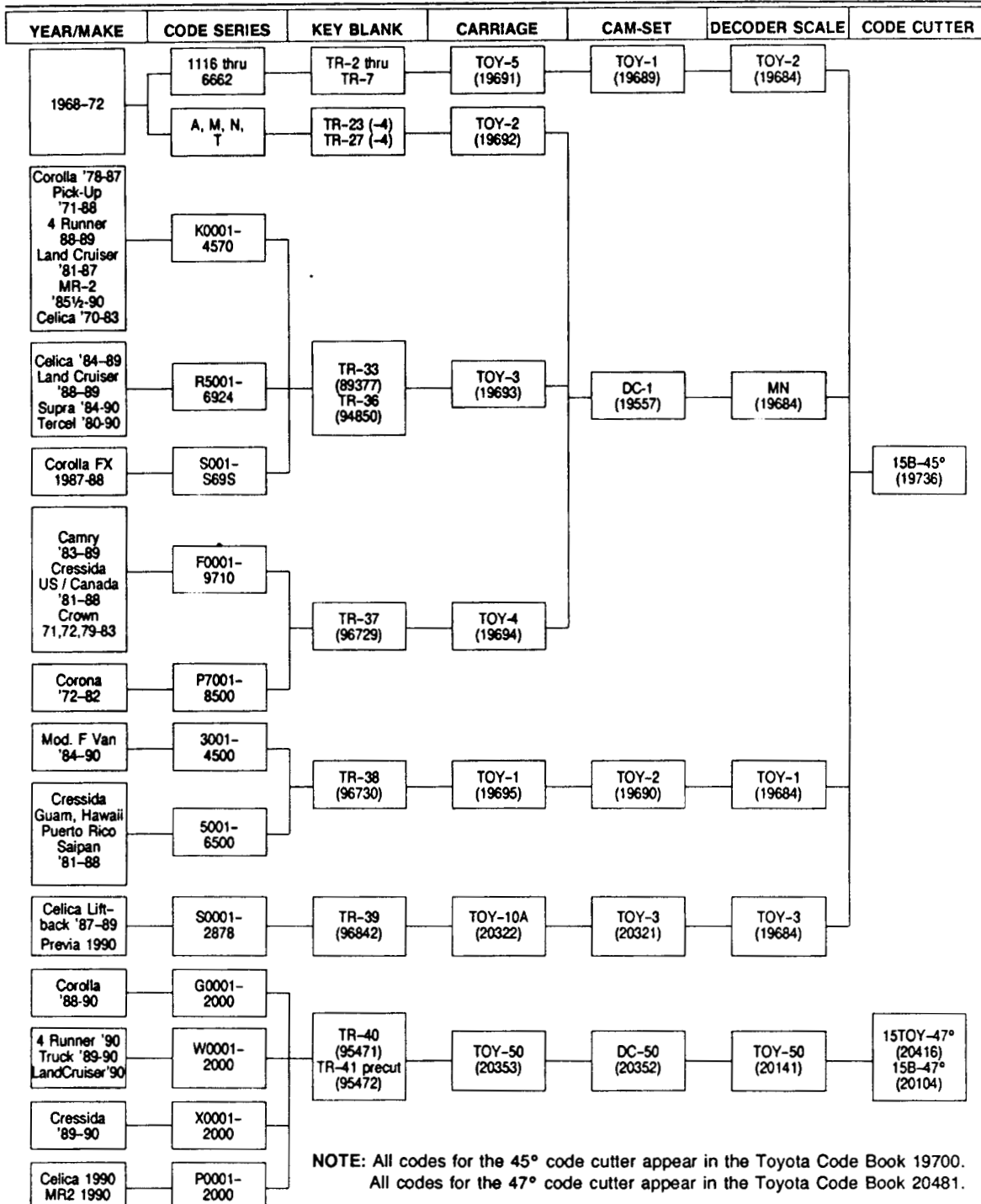
# TOYOTA FLOW CHART



CODE KITS

4-2-101

## TOYOTA



NOTE: All codes for the 45° code cutter appear in the Toyota Code Book 19700.  
All codes for the 47° code cutter appear in the Toyota Code Book 20481.

Printed in U.S.A.

Retail

**Curtis Industries, Inc.**