

Tire Pressure Warning System Initialization

Service Category General

Section Pre-Delivery Service

Market USA

Toyota Supports
 ASE Certification 

Applicability

YEAR(S)	MODEL(S)	ADDITIONAL INFORMATION
2010	Matrix	

Introduction

The 2010 model year Matrix is equipped with a direct-type Tire Pressure Warning System (TPWS). Each tire (except spare tire) has a tire pressure warning valve/sensor that measures tire pressure. The data is transmitted to the Tire Pressure Warning System antenna/receiver and then to the Tire Pressure Warning System ECU.

During Pre-Delivery Service (PDS), the Tire Pressure Warning System must be initialized according to the procedure in this bulletin.

NOTE

The Tire Pressure Warning System valves/sensors are activated at the manufacturing plant. Only the initialization process is required during PDS.

Required Tools & Equipment

REQUIRED EQUIPMENT	SUPPLIER	PART NUMBER	QTY
TIS Techstream* NOTE: Software version 4.00.017 or later is required.	ADE	TSPKG1	1

* Essential SST.

NOTE

Additional TIS Techstream units may be ordered by calling Approved Dealer Equipment (ADE) at 1-800-368-6787.

Warranty Information

OP CODE	DESCRIPTION	TIME	OFF	T1	T2
N/A	Not Applicable to Warranty	—	—	—	—

Tire Pressure Warning System Initialization

Initialization Procedure

1. Adjust all tires (**except the spare tire**) to the standard tire inflation pressure, as indicated on the Tire and Loading Information label on the vehicle.

NOTE

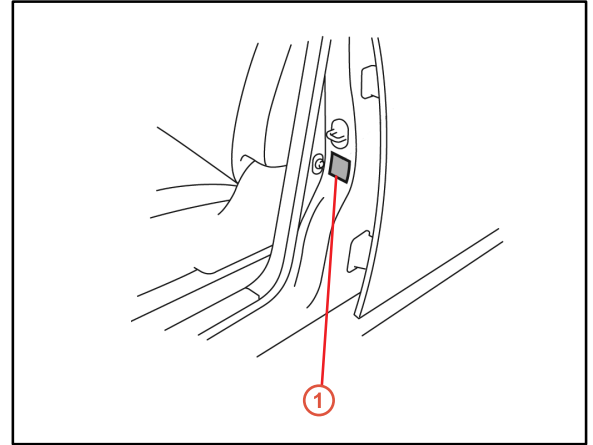
Adjust the tire pressure when the tires are cold.

NOTE

To adjust tire pressure correctly when outside temperature is significantly colder or warmer than shop temperature. Follow the procedures outlined in the Tire Inflation Pressure Compensation and Adjustment service bulletin ([T-SB-0345-08](#))

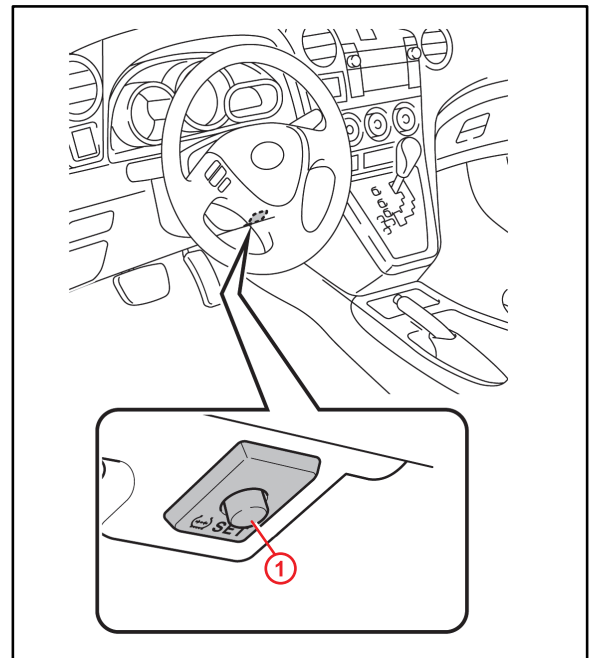
2. Cycle the ignition switch to the "IG-ON" position and check that the Low Tire Pressure Warning Light is OFF.

Figure 1.



1 | Tire and Loading Information Label

Figure 2.



1 | Tire Pressure Warning Reset Switch

Tire Pressure Warning System Initialization

Initialization Procedure (Continued)

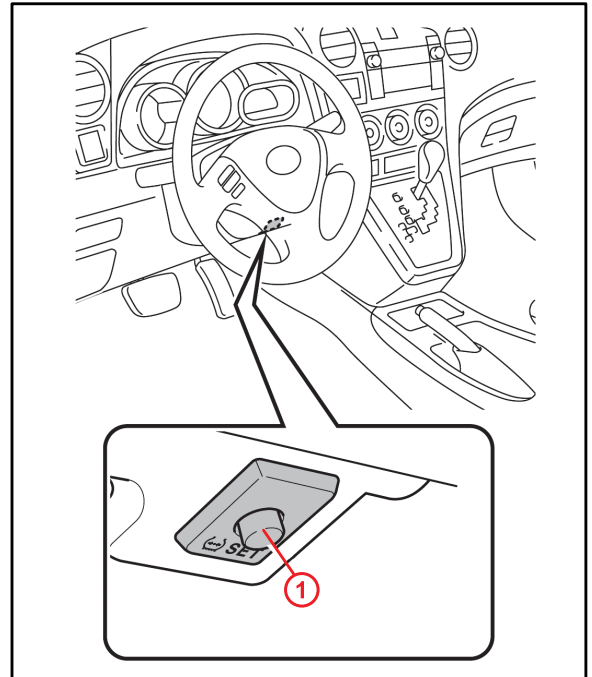
3. Push and hold the Tire Pressure Warning “SET” Switch until the Low Tire Pressure Warning Light blinks 3 times and then turns OFF, indicating the system initialization has begun.

The ignition switch MUST be left in the “IG-ON” position for AT LEAST 7 minutes for initialization to complete.

NOTE

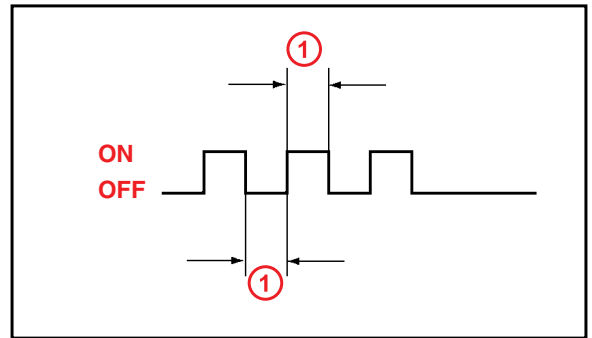
Initialization will NOT complete if the ignition switch is NOT left in the “IG-ON” position for AT LEAST 7 minutes.

Figure 3.



1 Tire Pressure Warning Reset Switch

Figure 4. Tire Pressure Warning Light Output Pattern:



1 1 second

4. Cycle the ignition switch to the “OFF” position and then to the “IG-ON” position.
5. Connect TIS techstream to DLC3.
6. Select the Tire Pressure Warning System Data List.
TPWS ECU / DATA LIST / TIREPRESS 1 – 4

Tire Pressure Warning System Initialization

Initialization Procedure (Continued)

7. Confirm that each tire pressure on the TIS techstream Data List shows the set value from step 1.
 - If the tire pressure is correct, initialization is complete.
 - If the tire pressure is incorrect, check the tire pressure gauge and repeat steps 1 – 7.