



**Technical Service  
BULLETIN**

February 4, 2000

Title:

**POWER WINDOW DIAGNOSIS  
PROCEDURE**

Models:

'99 4Runner

**ELECTRICAL**  
**EL0001-00**

**Introduction** Additional procedures have been developed to complement the **BODY ELECTRICAL – Power Window Control System** section of the **1999 4Runner Repair Manual, Vol. 2 (RM663U2)**.

The **Troubleshooting** and **Jam Protection Adjustment** procedures detailed in the following pages should be used in conjunction with the **Inspection** Procedures starting on pages BE-59 through BE-64 of the Repair Manual (RM663U2).

- Applicable Vehicles**
- 1999 4Runner

**Warranty  
Information**

OP CODE	DESCRIPTION	TIME	OPN	T1	T2
N/A	Not Applicable to Warranty	–	–	–	–

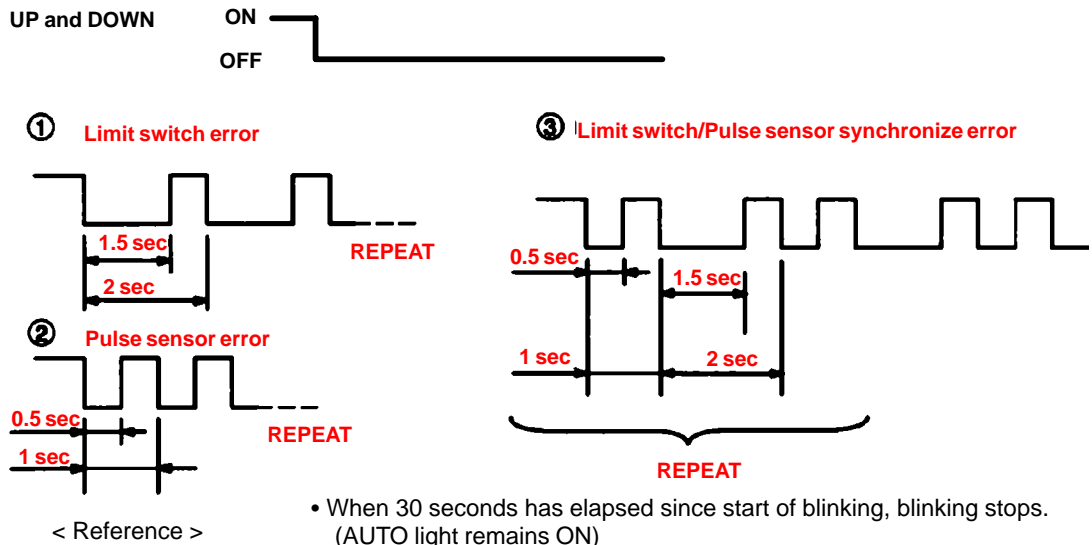


# POWER WINDOW CONTROL SYSTEM TROUBLESHOOTING

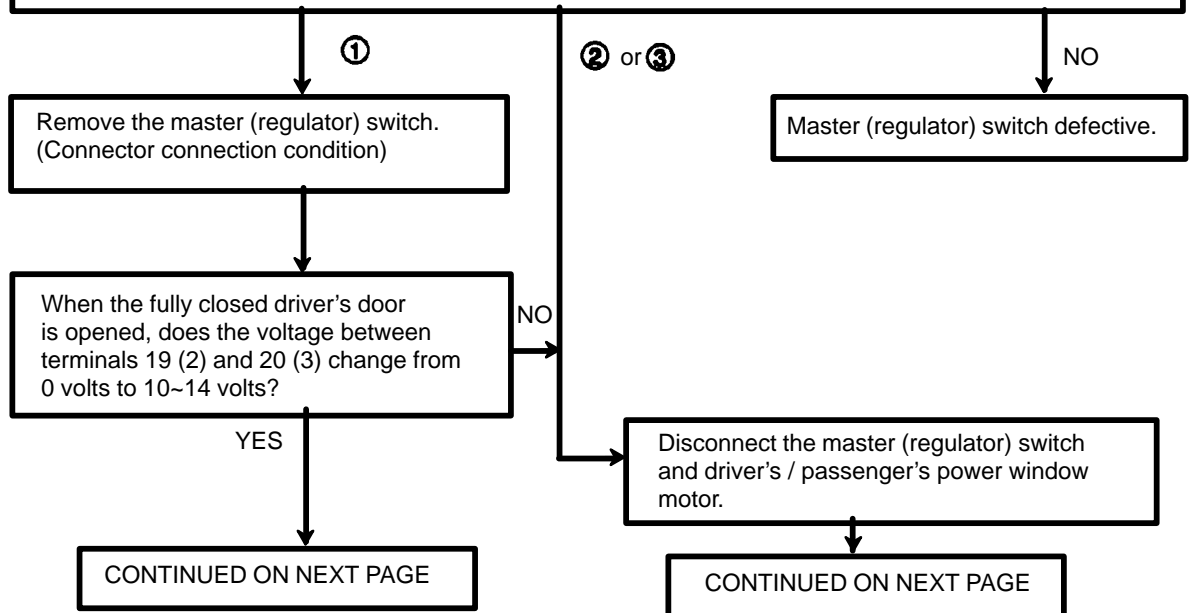
**1 One touch power window does not move up and down. (Prepare normal master and regulator switch.)**

After turning the ignition switch ON and power window regulator switch UP and DOWN on the passenger side, check that the master and regulator switch AUTO light blinks.

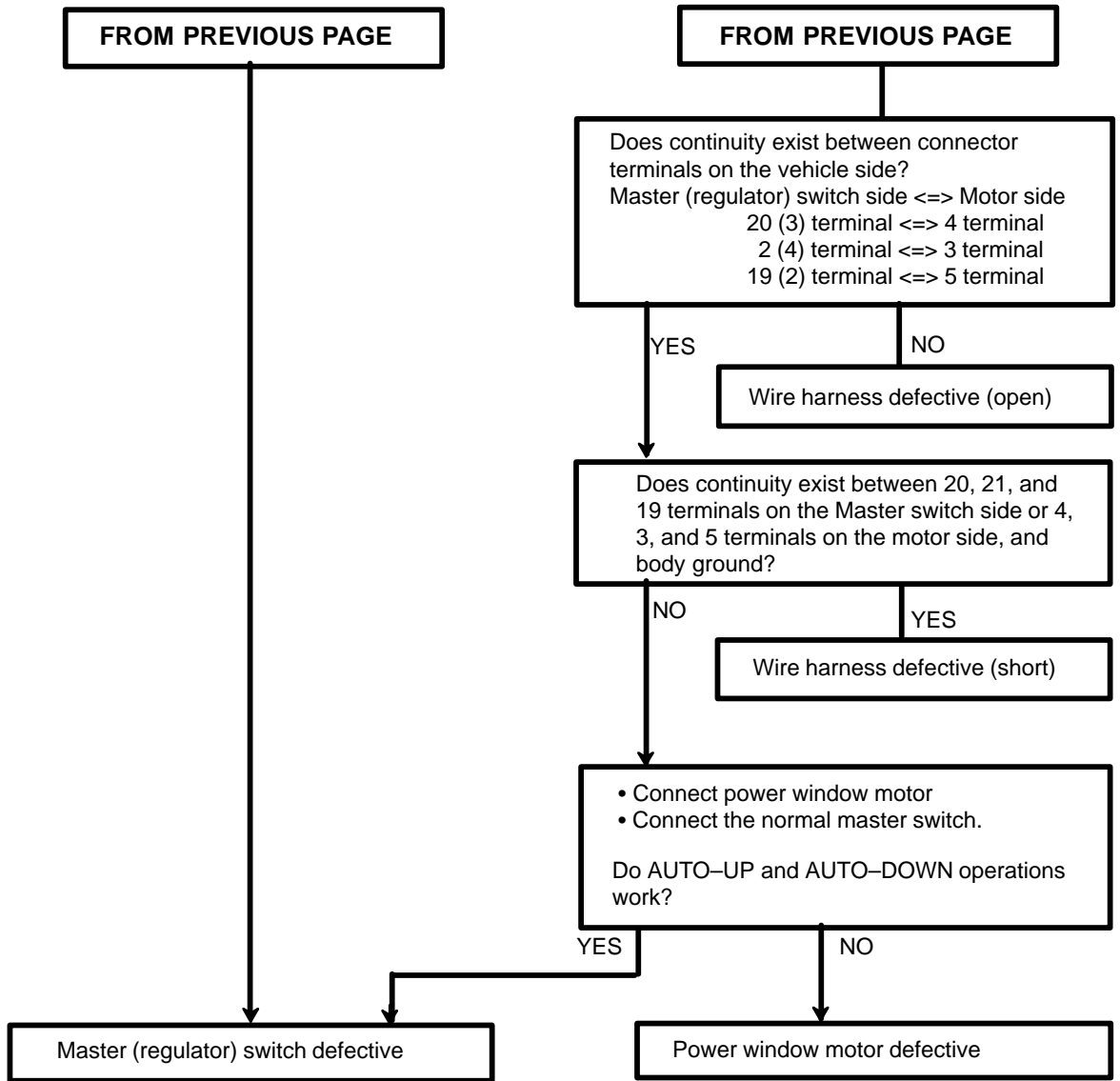
\* Error is classified into the following 3 types according to the pattern of blinking.



- When 30 seconds has elapsed since start of blinking, blinking stops. (AUTO light remains ON)
- When turning the ignition key OFF, blinking stops.



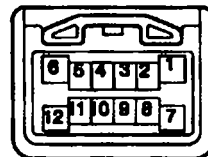
Troubleshooting Procedures  
(Continued)



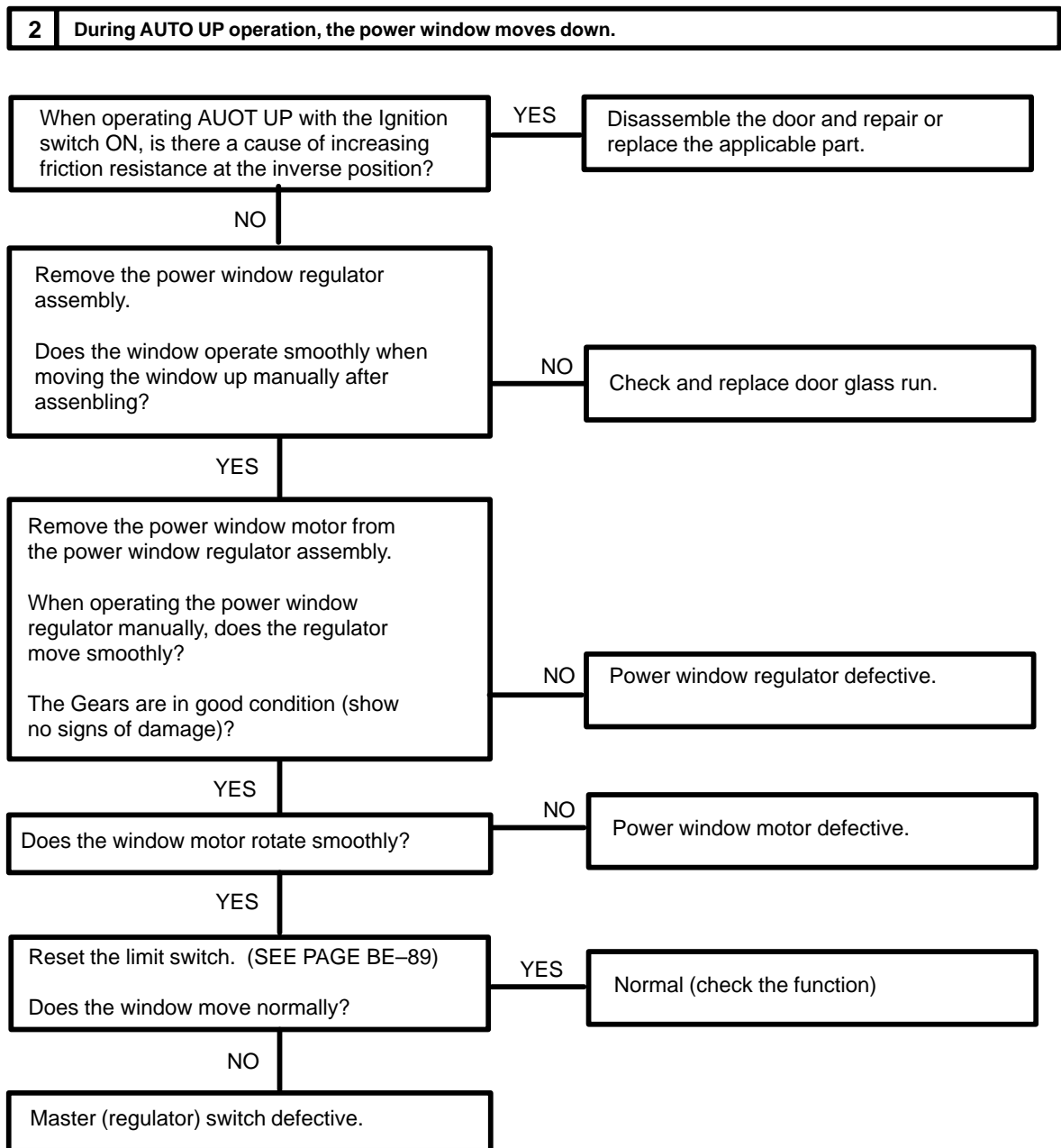
MASTER SWITCH



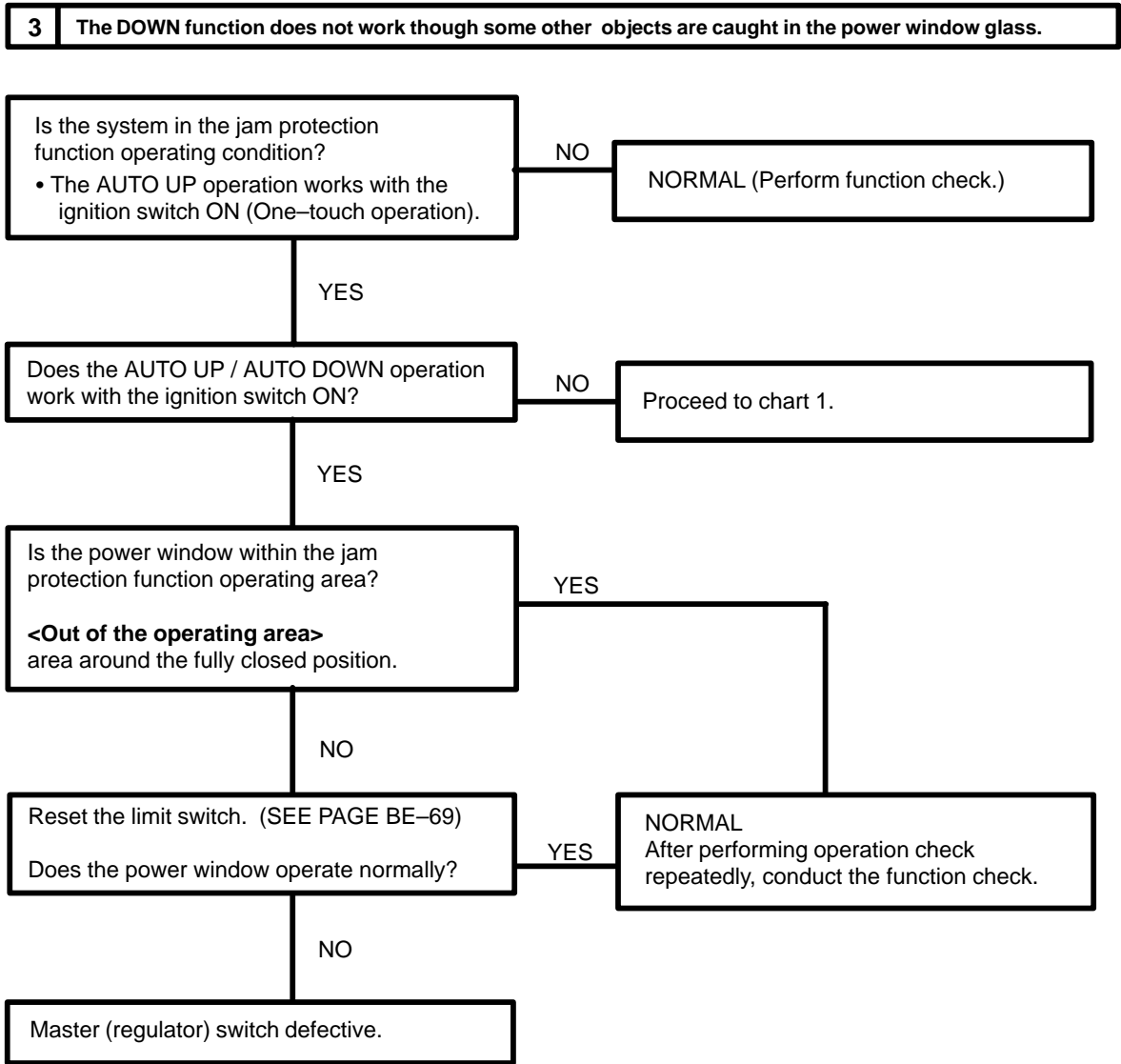
REGULATOR SWITCH



Troubleshooting Procedures  
(Continued)



Troubleshooting Procedures  
(Continued)



Troubleshooting  
Procedures**JAM PROTECTION ADJUSTMENT****HINT:**

When performing the operation described below, it is necessary to reset the power window (Initial setting of limit switch).

- When the window regulator is separated from the power window motor.
- When the window regulator is operated with the door glass not installed.

**1. HOW TO RESET DRIVER AND PASSENGER WINDOW MOTOR**

- a. Remove the power window regulator assembly from the vehicle.
- b. Mark the position of the regulator where it contacts the motor gear.
- c. Remove the motor from the regulator assembly.
- d. Connect the power window motor connector to the vehicle side wire harness.
- e. Using the manual–up switch rotate the power window motor towards the up direction more than 6 turns and less than 10 turns.
- f. Disconnect the motor from the harness.
- g. Reposition the motor to the regulator aligning the motor to the reference mark you placed on the regulator in step b.

**NOTE:**

**Do not rotate the motor with the switch until the completion of the window glass installation.**

**2. CHECK POWER WINDOW FUNCTION**

Confirm the operation of the window function by cycling the window AUTO–UP and AUTO–DOWN several times.