



Introduction

The cassette tape head and capstan should be cleaned regularly to prevent poor sound quality and/or cassettes from jamming.

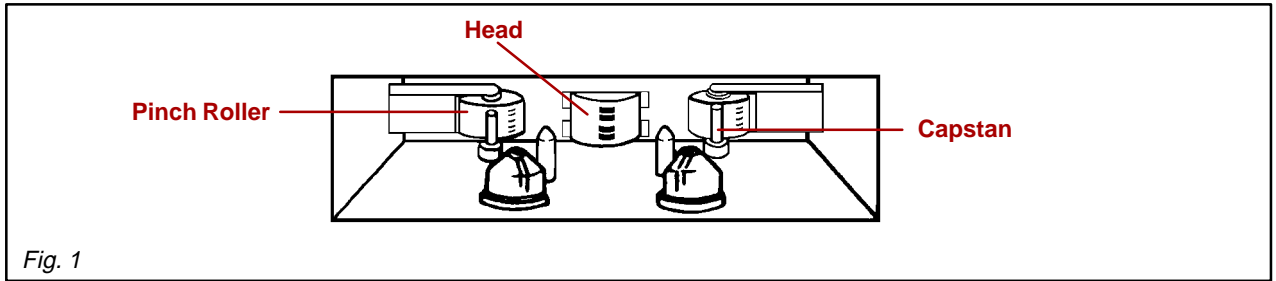


Fig. 1

Conditions

The following conditions can easily be avoided by regularly cleaning the head with a tape cleaner and only using good quality cassettes.

Poor Sound Quality due to Dirty Head

Since the tape head contacts the cassette tape, the tape head accumulates metal oxides and dirt particles from the tape. In time, a layer of dirt forms on the tape head resulting in poor transfer of information between the tape and the tape head. This typically causes a reduction of the higher frequencies or a reduction of the brightness in sound quality.

Tape Speed

Tape speed is controlled by the tape capstan and pinch rollers. If the capstan and pinch rollers accumulate dirt, the tape may slip causing the music to play too fast or too slow.

Jamming

Dirt can make the capstans sticky, causing the tape to become entangled in the cassette mechanism. This can cause the cassette to become jammed in the player.

Cassette Tape Head Cleaners

To reduce the occurrence of these conditions, the following approved cassette cleaners are available through the non-parts system (Material Distribution Center).

TOOLS & MATERIALS	MATERIAL NUMBER	DESCRIPTION
Allsop 3 Cassette Recorder Cleaner	00113-AS710-00	Cleaning Cassette and Cleaning Solution with Instruction Sheet

NOTE:

Allow 15 minutes for the cleaning fluid to evaporate before playing a tape.

**Cassette
Tape Care
Procedure**

The following precautions should be taken to keep cassettes in good condition:

1. Remove the cassette from the player when the cassette is not in use.
2. Store the cassette in its case.
3. Store the cassette in a cool, dry area away from direct sunlight and magnetic components such as speakers.
4. Avoid touching the tape itself. This could result in poor sound quality or sound drop out.
5. Keep the tape tightly wound as shown in figure 2. Tape speed can be affected by loosely wound tape.

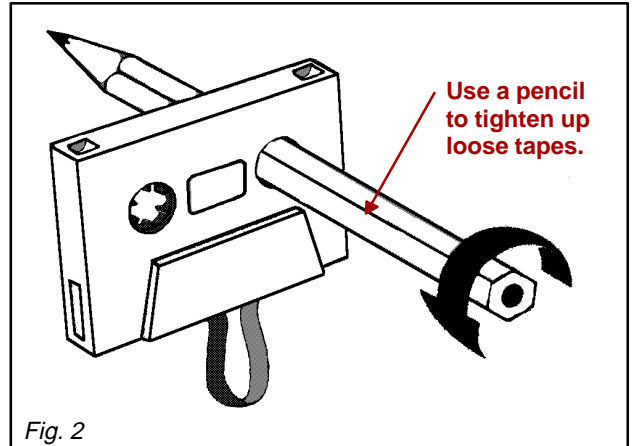


Fig. 2

6. Avoid inserting a cassette into the player if the cassette label is loose or peeling as shown in figure 3. This can cause a cassette to become stuck in the player.

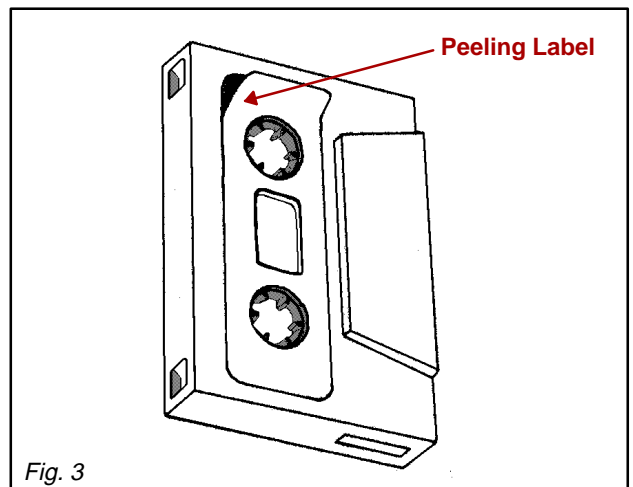


Fig. 3

7. Use cassettes that are 90 minutes or less in length. Cassettes over 90 minutes use extremely thin tape that is subject to stretch, resulting in poor sound quality.

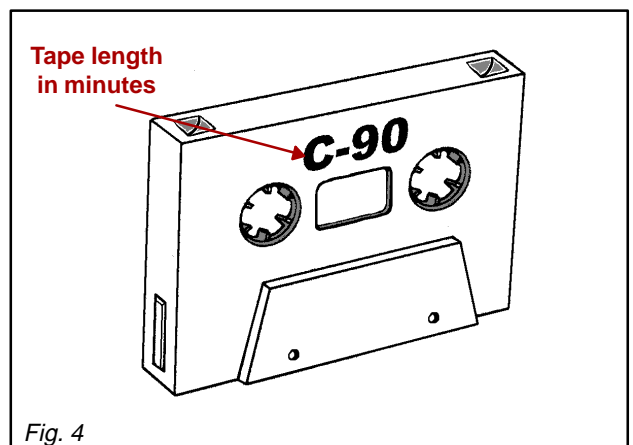


Fig. 4