

# TOYOTA

## SERVICE BULLETIN

TOYOTA MOTOR SALES, U.S.A., INC.

VOLUME

10

TRANSMISSION &  
CLUTCH

REFERENCE \_\_\_\_\_

NUMBER 020

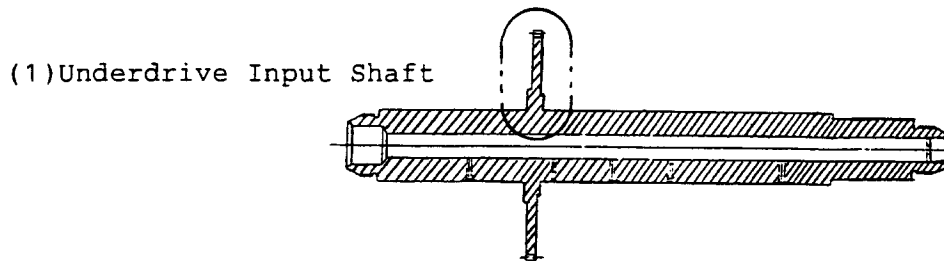
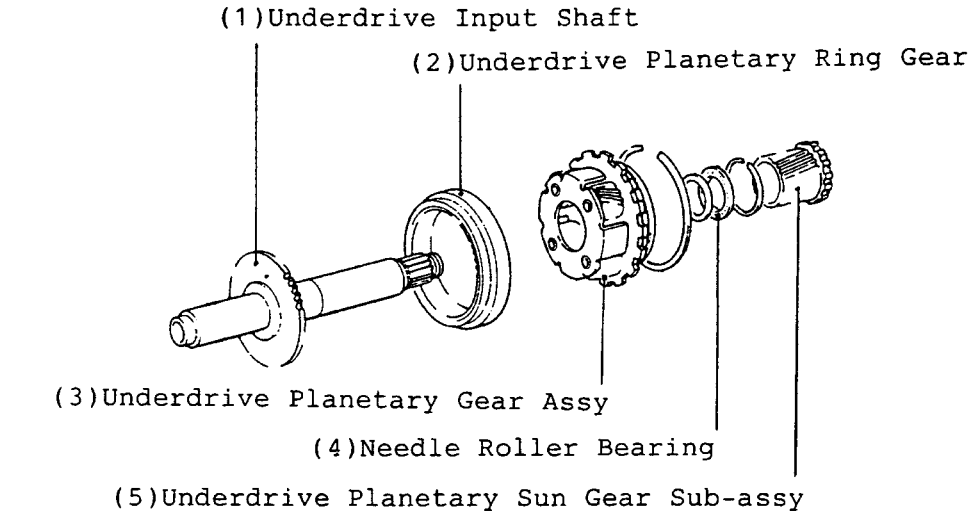
DATE 10-06-89

MODEL AE9#, AW1# with  
A24# SERIES A/TM

Page 1 of 3

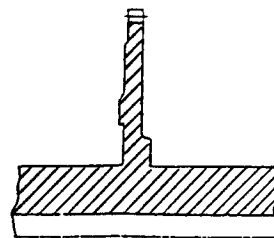
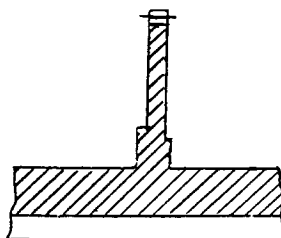
### A24# SERIES A/TM UNDERDRIVE GEAR UNIT

For parts standardization on the A24# series A/TM, the following modifications have been made to the Underdrive Gear Unit.



Previous

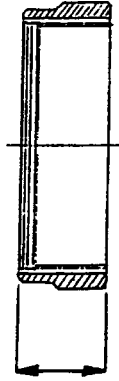
New



TECHNICAL ASSURANCE DEPARTMENT

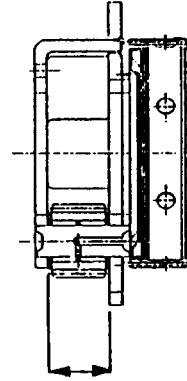
### A24# SERIES A/TM UNDERDRIVE GEAR UNIT (CONT'D)

(2) Underdrive Planetary Ring Gear



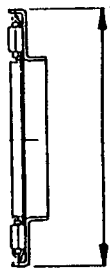
Previous	New
33.7mm	34.9mm

(3) Underdrive Planetary Gear Assy.



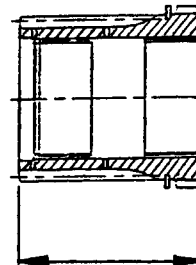
Previous	New
22.3mm	24.3mm

(4) Needle Roller Bearing



Previous	New
43.8mm	45.2mm

(5) Underdrive Planetary Sun Gear Sub-assembly



Previous	New
48.3mm	49.5mm

## A24# SERIES A/TM UNDERDRIVE GEAR UNIT (CONT'D)

### PRODUCTION EFFECTIVE:

<u>From VIN</u>	<u>P/D</u>	<u>Trans Type</u>	<u>A/TM Serial No.</u>
JT2AE9##K0160864	6/89	A240L	9EZ-00500
JT2AE9##K3279648	6/89	A240L	9EZ-00500
JT2AE94##K0082614	6/89	A241H	9EZ-00407
JT2AW1##K0157128	6/89	A240E, A241E	9EZ-00500

### PART NUMBER INFORMATION:

	<u>Prev. Part No.</u>	<u>New Part No.</u>	<u>Part Name</u>
(1)	34301-10010	*34301-20010	Shaft Sub-assy, Underdrive Input
(2)	34341-12010	*34341-20010	Gear, Underdrive Planetary Ring
(3)	34330-12020	*34330-20010	Gear Assy, Underdrive Planetary
(4)	90364-31003	*90374-31002	Bearing, Thrust Needle Roller
(5)	34302-12010	*34302-20010	Gear Sub-assy, Underdrive Planetary Sun

\* PARTS ARE INTERCHANGEABLE AS A SET ONLY