

Tire Pressure Warning System Activation

Service Category General

Section Pre-Delivery Service

Market USA

Toyota Supports
 ASE Certification 

Applicability

YEAR(S)	MODEL(S)	ADDITIONAL INFORMATION
2010	FJ Cruiser	

Introduction

2010 model year FJ Cruiser vehicles are equipped with a direct-type Tire Pressure Warning System (TPWS). Each tire (including the spare tire) has a tire pressure warning valve/sensor, and the measured tire pressure data is transmitted to the Tire Pressure Warning System antenna/receiver to the Tire Pressure Warning System ECU.

During Pre-Delivery Service (PDS), the tire pressure warning valves/sensors must be activated according to the procedure in this bulletin.

Required Tools & Equipment

REQUIRED EQUIPMENT	SUPPLIER	PART NUMBER	QTY
TIS Techstream* NOTE: Software version 4.20.018 or later is required.	ADE	TSPKG1	1

* Essential SST.

NOTE

Additional TIS Techstream units may be ordered by calling Approved Dealer Equipment (ADE) at 1-800-368-6787.

Warranty Information

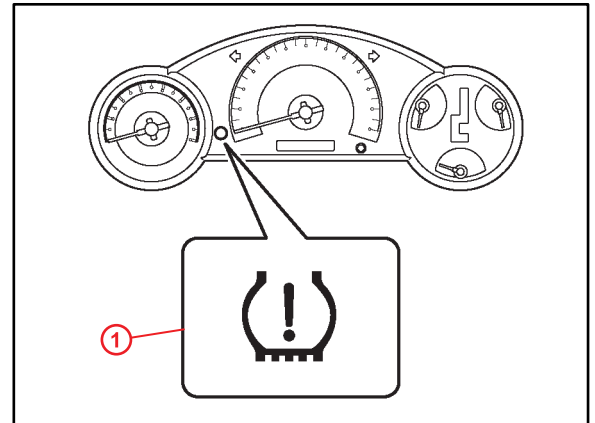
OP CODE	DESCRIPTION	TIME	OFP	T1	T2
N/A	Not Applicable to Warranty	–	–	–	–

Tire Pressure Warning System Activation

Reference

- After cycling the ignition to the "IG-ON" position, the Low Tire Pressure Warning Light will blink and remain illuminated until all the tire pressure warning valves/sensors are activated.
- The Diagnostic Trouble Codes (DTCs) listed below may be stored in the TPWS ECU until the tire pressure warning valves/sensors are activated.
- The DTCs will automatically clear when the tire pressure warning valves/sensors are activated.

Figure 1.



1	Low Tire Pressure Warning Light
----------	--

DTC NO. *1	DTC NO. *2	DTC EXPLANATION
11	C2111	Transmitter ID1 Operation Stop
12	C2112	Transmitter ID2 Operation Stop
13	C2113	Transmitter ID3 Operation Stop
14	C2114	Transmitter ID4 Operation Stop
15	C2115	Transmitter ID5 Operation Stop

*1: DTC No. indicated by blinking of the Low Tire Pressure Warning Light.

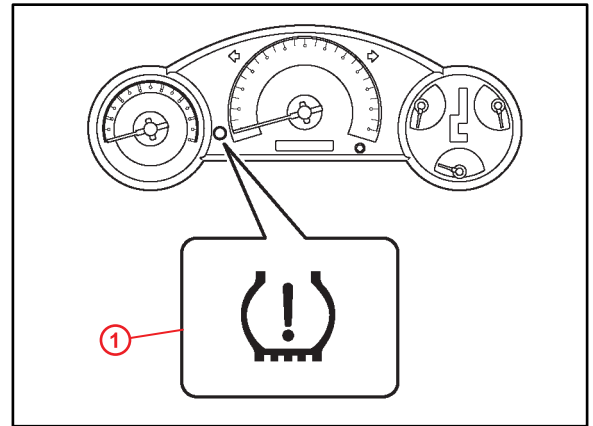
*2: DTC No. indicated on TIS Techstream.

Tire Pressure Warning System Activation

Activation Procedure

1. Connect TIS Techstream.
2. Cycle the ignition switch to the "ON" position and check that the Low Tire Pressure Warning Light blinks for 1 minute, and then remains illuminated.

Figure 2.



1 Low Tire Pressure Warning Light

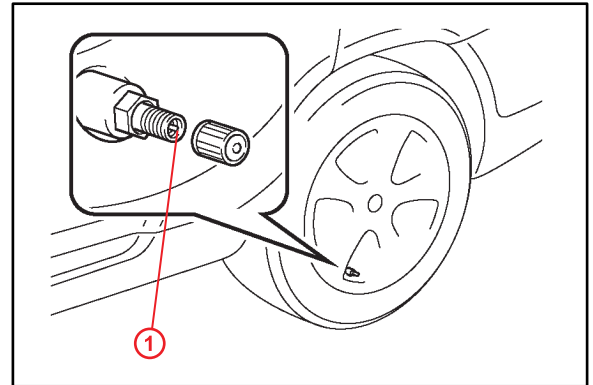
3. Press or remove the valve core to reduce the tire inflation pressure rapidly by 6 psi (0.4 kgf/cm², 40 kPa), or more, within 30 seconds.

If the tire inflation pressure is NOT reduced by 6 psi (0.4 kgf/cm², 40 kPa), or more, within 30 seconds, the tire pressure warning valves/sensors will NOT be activated.

NOTE

This operation is required for the system to be activated and must be performed for each tire (including the spare tire), one at a time.

Figure 3.



1 Core

4. Using TIS Techstream, check for TPWS DTCs.
 - If NO DTCs are stored, go to step 5.
 - If DTCs C2111 – C2115 are stored, repeat step 3.

Tire Pressure Warning System Activation

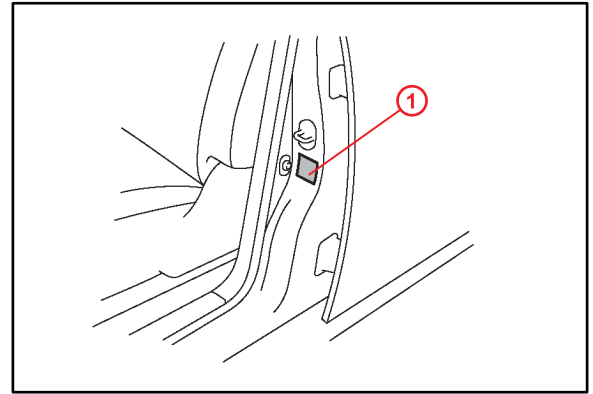
Activation Procedure (Continued)

5. Adjust all tires (including the spare tire) to the standard tire inflation pressure, as indicated on the Tire and Loading Information label located inside the driver's door jamb and confirm that the Low Tire Pressure Warning Light is OFF.

NOTE

- To adjust tire pressure correctly when outside temperature is significantly colder or warmer than shop temperature, follow the procedures outlined in the Tire Inflation Pressure Compensation and Adjustment service bulletin ([T-SB-0345-08](#)).
- Adjust the tire pressure when the tires are cold.

Figure 4.



1	Tire and Loading Information Label
----------	---

6. Check the tire pressure values of all the tires using TIS Techstream.
TPWS ECU / DATA LIST / TIREPRESS 1-5

NOTE

If the tire pressure values CANNOT be displayed on the TIS Techstream screen, the initialization is NOT completed. Repeat steps 3 – 6.