

TOYOTA

SERVICE BULLETIN

TOYOTA MOTOR SALES, U.S.A., INC.

VOLUME

9

| REFERENCE | PRODUCT GENERAL INFORMATION |
|-----------|-----------------------------|
| NUMBER | 021 (REVISED) |
| DATE | 10-28-88 |
| MODEL | ALL 1989 MODELS |

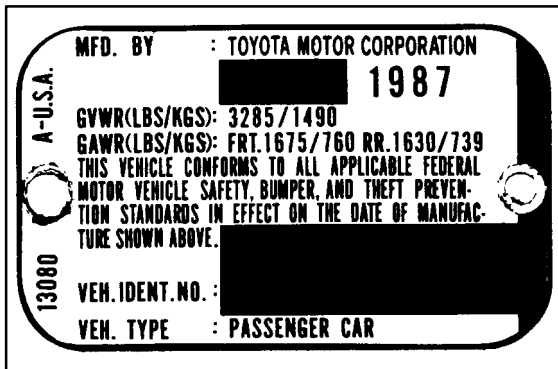
Page 1 of 2

1989 TOYOTA VEHICLE CERTIFICATION LABEL

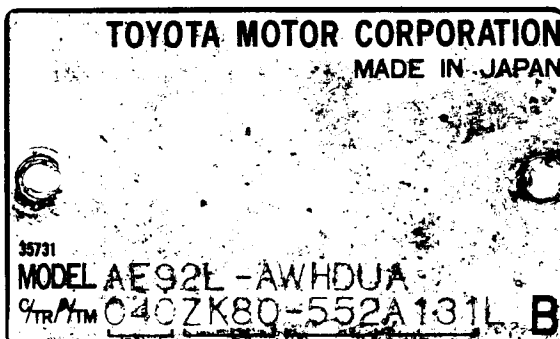
During the 1989 model year, Toyota will be phasing in a new vehicle certification label on all models. The aluminum certification regulation plate formerly used for this purpose, and the manufacturer's plate on the engine compartment side of the dash panel, will be replaced by the white vinyl label. (See illustration below).

The new vinyl label affixed to the lower rear edge of the driver's door or door pillar contains all the information from both aluminum plates and meets all of the regulatory requirements for vehicle identification and certification.

ORIGINAL CERTIFICATION AND MANUFACTURER'S PLATES



Original certification plate mounted on either the rear edge of the driver's door or on the driver's door post.



Manufacturer's plate mounted on the engine compartment side of the dash panel.


1989 TOYOTA VEHICLE CERTIFICATION LABEL (CONT'D)

NEW COMBINATION LABELS

MFD. BY: TOYOTA MOTOR SALES, U. S. A. INC.
 INC. VEH. MFD. BY: TOYOTA MOTOR CORP. 08/88
 GVWR 1234LB GAWR FR 1234LB RR 1234LB
 THIS VEHICLE CONFORMS TO ALL APPLICABLE
 FEDERAL MOTOR VEHICLE SAFETY, BUMPER, AND
 THEFT PREVENTION STANDARDS IN EFFECT IN
 08/88

C/TR: 040/FD34 MODEL: VZV130L-BTPVFAB
 A/TM: G285/A340E MADE IN JAPAN


AA00001830



New combination label containing information previously shown on both the certification regulation plate and manufacturer's plate. This label is affixed to the rear edge of the driver's door or door pillar. (Early versions of this label will appear as shown without the bar code.)


MFD. BY: TOYOTA MOTOR SALES, U. S. A. INC.
 INC. VEH. MFD. BY: TOYOTA MOTOR CORP. 08/88
 GVWR 1234LB GAWR FR 1234LB RR 1234LB
 THIS VEHICLE CONFORMS TO ALL APPLICABLE
 FEDERAL MOTOR VEHICLE SAFETY, BUMPER, AND
 THEFT PREVENTION STANDARDS IN EFFECT IN
 08/88

JT5MA70L6G0015204 PASS. CAR



C/TR: 040/FD34 MODEL: VZV130L-BTPVFAB
 A/TM: G285/A340E MADE IN JAPAN

AA00001831



New combination label as it will appear in its final form with the bar code.